



# Saltash

Economic Profile,  
January 2016

29 January 2016

Economic Development Service

<b>Summary</b>	<b>3</b>
<b>A Introduction</b>	<b>6</b>
1. Overview	6
<b>B Saltash</b>	<b>9</b>
2. Population	9
3. Economic activity	10
4. Hours worked	12
5. Businesses	12
6. Employment	14
7. Occupation	17
8. Qualifications	18
9. Jobseekers Allowance	19
10. Vacancies	20
11. Travel to work - residents	21
12. Travel to work - workplace	22
13. Commuting patterns	23
14. Earnings	24

## Summary

### Population

Census data gives a total of 16,419 usual residents in 2011, of these 63.4% were of working age. The percentage of working age is above the average for Cornwall (61.5%), but below that for England (64.8%).

### Economic activity

Data from the 2011 census provides an insight into the economic status of the 16-74 age group. In 2011 there were 8,494 economically active; and 3,690 economically inactive in the town. Saltash had a higher percentage of economically active and employed compared to the Cornish average. Of the economically active, Saltash had a slightly higher percentage in employment with lower levels of unemployment. Saltash also had a lower percentage of people who were self-employed.

Of the economically inactive, Saltash had a far higher share of retired people, and a lower share of those Looking after home or family.

In relation to the unemployed, Saltash had a higher share of those who were aged 16-24.

### Hours worked

Overall a lower proportion of Saltash residents worked part-time – between 16-30 hours, (21.4%) than on average for Cornwall (23.1%), but with a higher percentage working between 31-48 hours (55.8% to 52.3%).

### Businesses

In 2015 there were 700 businesses in the Saltash area. The main sectors were Wholesale, retail and motors (24%), Construction (14%), and Professional, scientific and technical (11%). All three are over-represented in relation to the Cornish average.

The data indicates that Saltash has a similar profile in terms of business units to that of Cornwall as a whole, but higher in the 50 to 249 category.

### Employment

Employment data (employees and working proprietors) shows that a total of 5,100 were employed. The largest sector here was Wholesale, retail & motors accounting for a third of all employed. Health and Education were the next largest sectors at 14.3% and 13.5% respectively. Wholesale, retail and motors was over-represented in relation to the average for this sector in Cornwall.

Census 2011 Data from the 2011 census shows that of those resident in Saltash a total of 8,101 people were in employment. This includes all usual residents aged 16 to 74 in employment the week before the census. This does not show where people work. Wholesale and retail (17.1%), Health (13.6%) and Education (12.2%) were the main sectors.

Workforce Census 2011 Data from the 2011 census shows the workforce in Saltash, including residents who work in the town and people who

commute in. A total of 5,258 people worked in Saltash. This includes all those aged 16 to 74 in employment the week before the census. The largest sector was Wholesale, retail and motors at 25.2%, followed by Education (13.4%) and Health (13.0%). Both Wholesale, retail and motors and Education are over-represented compared to the Cornish average.

### **Occupation**

In relation to the Cornish average, Saltash residents were over-represented in terms of Professional occupations (16.7% to 13.8%), Associate professional and technical occupations (12.6% to 10.4%), and under-represented in terms of Managers, directors and senior officials (9.9% to 11.4%), Skilled Trades occupations (13.8% to 17%), and Elementary occupations (9.7% to 12.0%).

### **Qualifications**

Data from the 2011 census shows the qualifications held by all usual residents aged 16 and over. Saltash had a slightly lower percentage with no qualifications and with other qualifications compared to the Cornish average. For levels 3 and 4 the proportions were higher in Saltash.

### **Jobseekers Allowance**

Jobseekers Allowance (JSA) data shows that the rate for Saltash has been lower than the Cornish average 0.8% to 1.2%. Both numbers and rates have declined over the year.

Analysis of the JSA data by current occupation over 20151, shows that the occupational structure of claimants varies from the Cornish average for several groups. There were fewer in the Professional, Personal Service and Elementary occupations and Process, Plant and Machine operatives and more in Sales and Customer Service and Occupation unknown.

### **Vacancies**

In 2015 there was a total of 732 vacancies in Saltash.

### **Travel to work**

Compared to the average for Cornwall, fewer residents worked from home (8.9% to 15.8%), or walked to work (9.4% to 11.8%). However, a far higher percentage drove a car or van (60.3% to 60.2%).

The 2011 census includes an analysis of the mode of travel to work including the number working from home, based on workplace. This shows that three-fifths of those working in Saltash drove a car or van to work (above the Cornish average), with a further 4.8% being a passenger in a car or van. A lower percentage worked at home 12.7% compared to 16.4%, while slightly more walked to work – 12.9% compared to 12.1%.

### **Commuting patterns**

Data from the 2011 census shows that nearly two-fifths of residents who were in employment worked in Plymouth. 22% worked in Saltash with

---

<sup>1</sup> Data based on average for the period.

<sup>2</sup> Includes employees and self-employed; covers the three Saltash MSOAs.

another 10.4% working at or from home and 8.3% with no fixed place of work. Overall, 46.8% of those in employment worked in Cornwall.

Of those who worked in Saltash, 46.3% lived in Saltash, while 19.4% lived in Plymouth.

### **Earnings**

Workplace Average annual workplace earnings for all employees in 2015 was £16,449. This equalled 73.1% of the UK average of £22,487. This was the second lowest figure for a Parliamentary Constituency in Cornwall (Lowest earnings were in St. Ives PC at £14,327 (63.7% of UK). The highest earnings were in Camborne and Redruth at £19,336 (86% of the UK average).

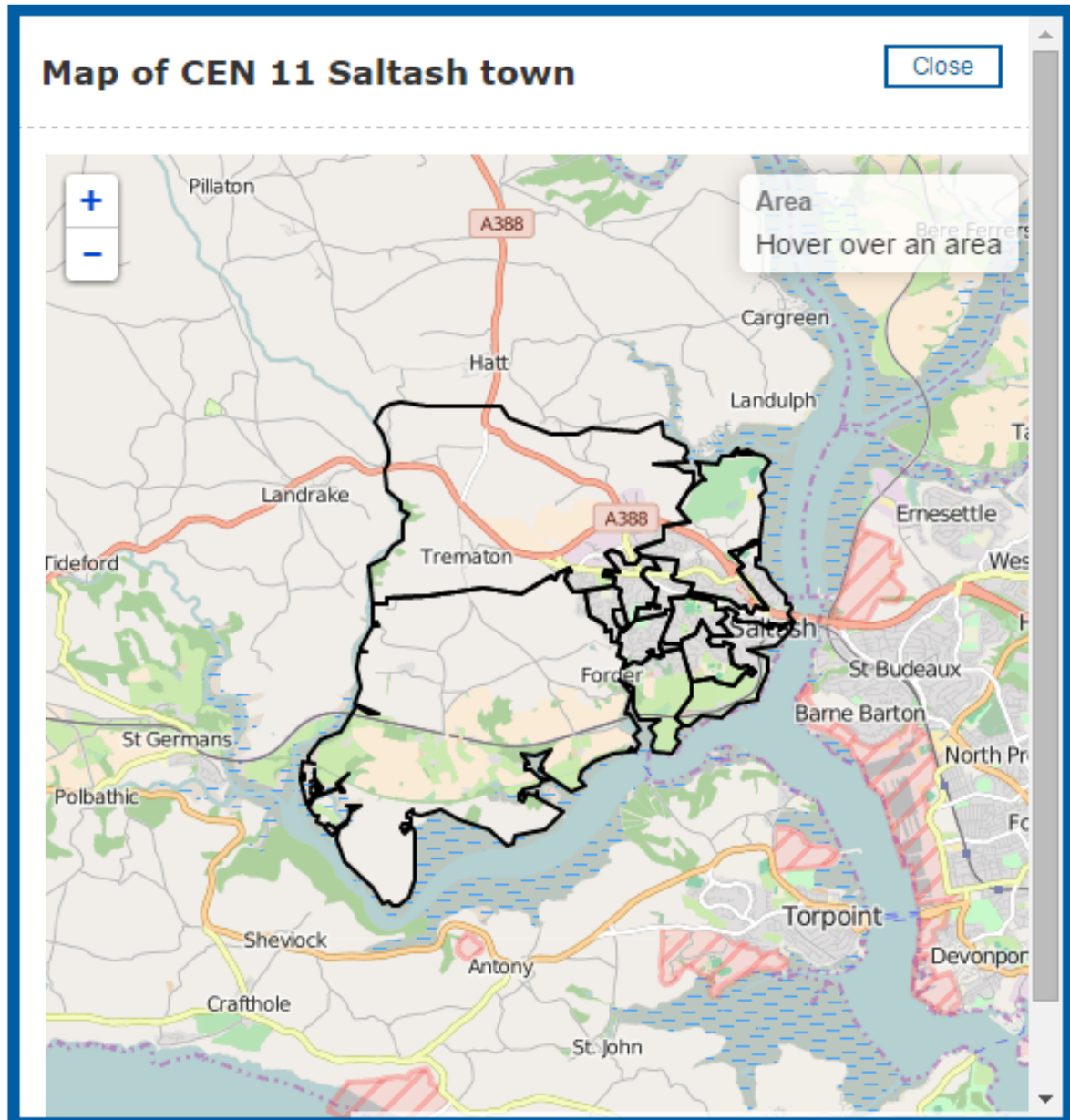
Annual Earnings – resident Resident annual earnings in 2015 in South East Cornwall totalled £18,971 (84.4% of the UK average). This was the second highest of the Parliamentary Constituencies in Cornwall.

## A Introduction

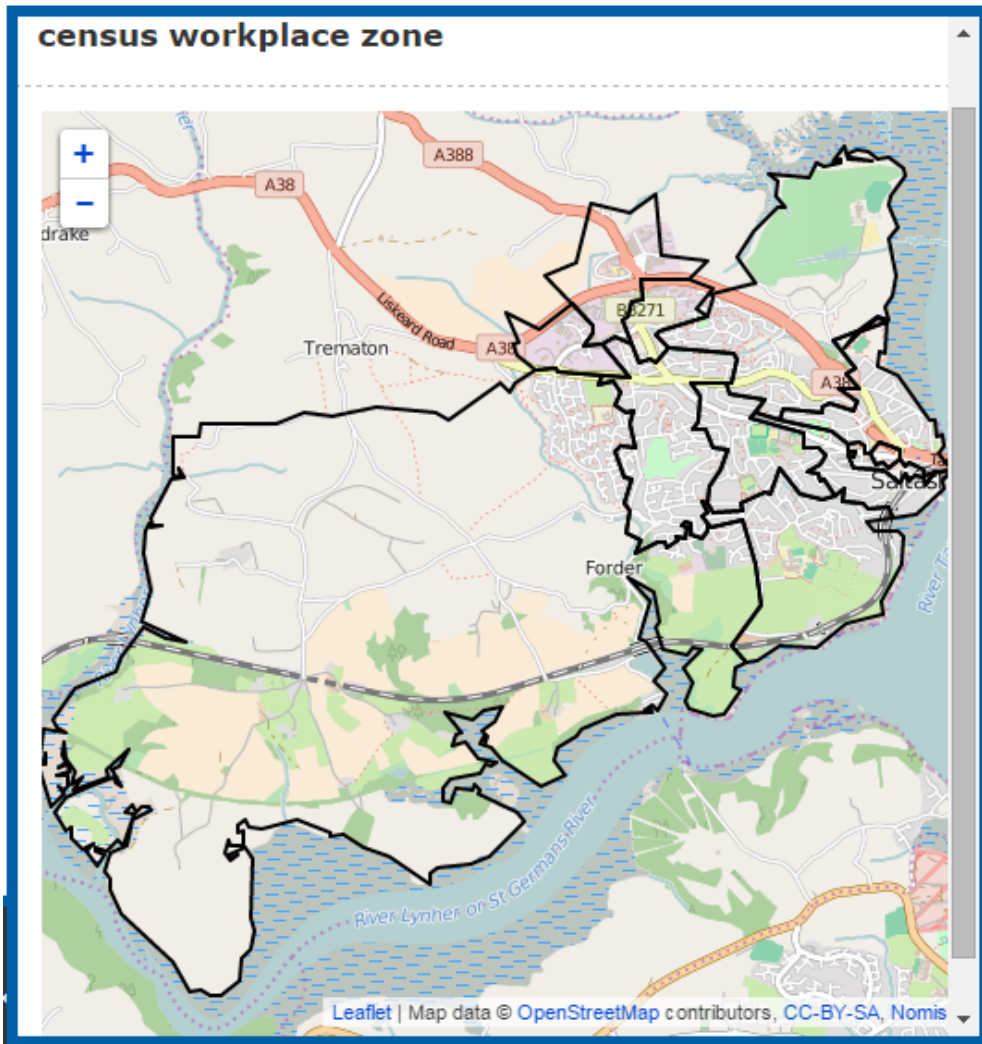
### 1. Overview

This short report brings together economic data for Saltash. Wherever possible the data applies to the town itself. Other data is derived from a wider area such as the Middle Super Output Area which includes Saltash.

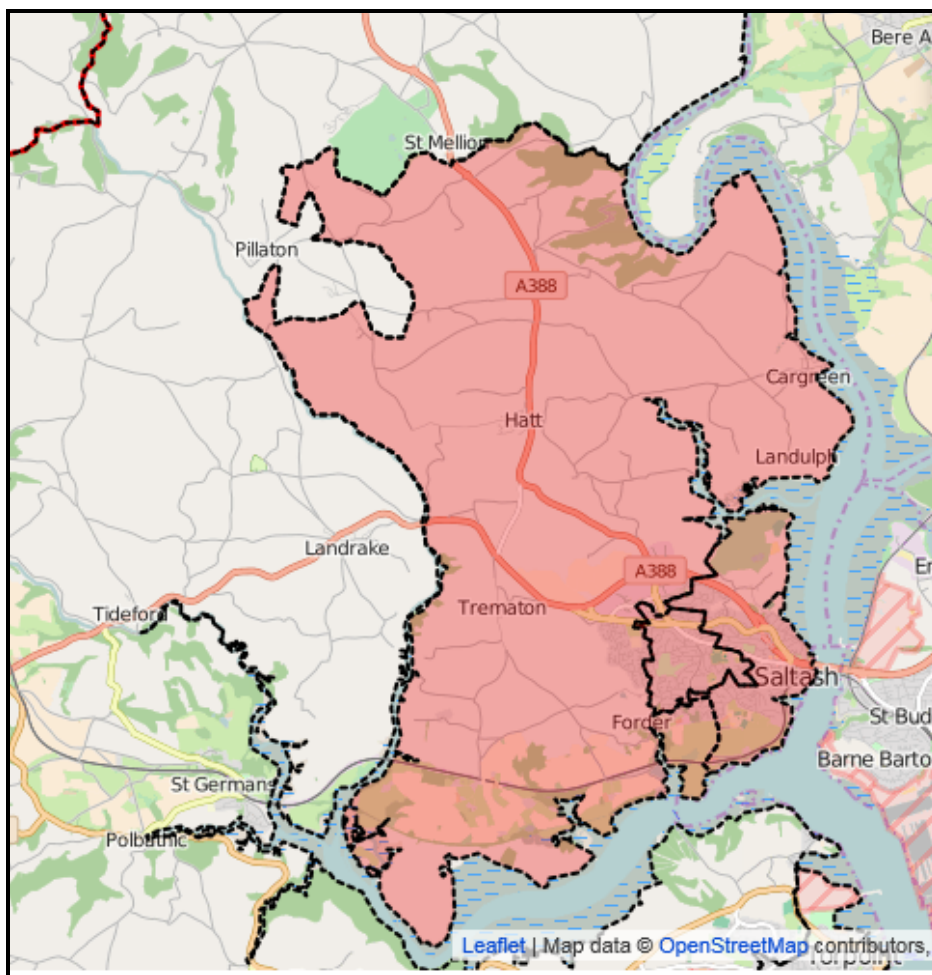
#### Map 1 Saltash town



**Map 2** The map below shows the area included in Saltash using workplace zones.



**Map 3** The map below shows the three Middle Super Output Areas that comprise Saltash town and adjacent area.





## B Saltash

### 2. Population

Census data gives a total of 16,419 usual residents in 2011, of these 63.4% were of working age. The percentage of working age is above the average for Cornwall (61.5%), but below that for England (64.8%). [Map 1]

<b>Age structure 2011</b>				
Area	Saltash		Cornwall	England
Age-group	No's	%	%	%
0-15	2,879	17.5	16.8	18.9
16-64	10,412	63.4	61.5	64.8
65+	3128	19	21.6	16.4
<b>All</b>	<b>16419</b>	<b>100</b>	<b>100</b>	<b>100</b>

Source: NOMIS, Census 2011.

### 3. Economic activity

Data from the 2011 census provides an insight into the economic status of the 16-74 age group. In 2011 there were 8,494 economically active; and 3,690 economically inactive in the town. Saltash had a higher percentage of economically active and employed compared to the Cornish average.

[Map 1]

<b>Economic status – 2011 (All usual residents aged 16 to 74)</b>			
Area	Saltash		Cornwall
Category	No's	%	%
<b>Economically active</b>			
In employment	7,794	64.0	60.7
Employee: Part-time	1,993	16.4	15.4
Employee: Full-time	4,739	38.9	31.7
Self-employed	1,062	8.7	13.6
Unemployed	337	2.8	3.3
Full-time student	363	3.0	2.8
<b>Total</b>	<b>8,494</b>	<b>69.7</b>	<b>66.7</b>
<b>Economically Inactive</b>			
Retired	2,253	18.5	18.9
Student (including full-time students)	455	3.7	4.3
Looking after home or family	387	3.2	4
Long-term sick or disabled	485	4.0	4.4
Other	110	0.9	1.7
<b>Total</b>	<b>3,690</b>	<b>30.3</b>	<b>33.3</b>
<b>Unemployed</b>			
Age 16 to 24	123	1.0	1
Age 25 to 49	137	1.2	
Age 50 to 74	77	0.6	0.7
Never worked	46	0.4	0.3
Long-term unemployed	114	0.9	1.2
<b>Total</b>	<b>337</b>	<b>2.8</b>	<b>3.3</b>
<b>All</b>	<b>12,184</b>	<b>100</b>	<b>100</b>

Source: NOMIS, Census 2011.

Of the economically active, Saltash had a slightly higher percentage in employment with lower levels of unemployment. Saltash also had a lower percentage of people who were self-employed.

Of the economically inactive, Saltash had a far higher share of retired people, and a lower share of those Looking after home or family.

In relation to the unemployed, Saltash had a higher share of those who were aged 16-24.

<b>Economic status - 2011</b>			
<b>(All usual residents aged 16 to 74)</b>			
Area	Saltash		Cornwall
	No's	%	%
<b>Economically active</b>			
In employment	7,794	91.8	90.9
Employee: Part-time	1,993	23.5	23
Employee: Full-time	4,739	55.8	47.5
Self-employed	1,062	12.5	20.4
Unemployed	337	4.0	4.9
Full-time student	363	4.3	4.2
<b>Total</b>	<b>8,494</b>	<b>100.0</b>	<b>100</b>
<b>Economically Inactive</b>			
Retired	2,253	61.1	56.9
Student (including full-time students)	455	12.3	12.9
Looking after home or family	387	10.5	12
Long-term sick or disabled	485	13.1	13.1
Other	110	3.0	5.1
<b>Total</b>	<b>3,690</b>	<b>100.0</b>	<b>100</b>
<b>Unemployed</b>			
Age 16 to 24	123	36.5	30.2
Age 25 to 49	137	40.7	47.1
Age 50 to 74	77	22.8	22.7
Never worked	46	13.6	10.1
Long-term unemployed	114	33.8	35.7
<b>Total</b>	<b>337</b>	<b>100.0</b>	<b>100</b>

Source: NOMIS, Census 2011.

#### 4. Hours worked

Overall a lower proportion of Saltash residents worked part-time – between 16-30 hours, (21.4%) than on average for Cornwall (23.1%), but with a higher percentage working between 31-48 hours (55.8% to 52.3%). [Map 1]

<b>Hours worked - 2011</b>			
Area	Saltash		Cornwall
All	No's	%	%
Part-time: 15 or less	827	10.2	10.8
Part-time: 16-30	1,730	21.4	23.1
Full-time: 31-48	4,517	55.8	52.3
Full-time: 49 or more	1,027	12.7	13.8
<b>Total</b>	<b>8,101</b>	<b>100.0</b>	<b>100</b>

#### 5. Businesses

In 2015 there were 700 businesses in the Saltash area. The main sectors were Wholesale, retail and motors (24%), Construction (14%), and Professional, scientific and technical (11%). All three are over-represented in relation to the Cornish average. [Map 3]

<b>Business units - 2015</b>			
	Saltash		Cornwall
Sector	No's	%	%
A Agriculture, forestry and fishing	55	8	16
B Mining and quarrying	0	0	0
C Manufacturing	30	4	5
D Energy	0	0	0
E Water & waste	5	1	0
F Construction	100	14	11
G Wholesale, retail & motors	165	24	18
H Transport and storage	20	3	3
I Accommodation and food service	45	6	10
J Information and communication	10	1	3
K Financial and insurance	10	1	1
L Real estate activities	15	2	3
M Professional, scientific and technical	80	11	9
N Administrative and support	55	8	6
O Public admin etc.	10	1	1
P Education	25	4	2
Q Health and social work	50	7	5
R : Arts, entertainment and recreation	20	3	2
S : Other service activities	25	4	3
<b>Total</b>	<b>700</b>	<b>100</b>	<b>100</b>

Source: NOMIS, UK Business Counts - Local units.

The data indicates that Saltash has a similar profile in terms of business units to that of Cornwall as a whole, but higher in the 50 to 249 category.

<b>Units by employment sizeband – 2015</b>			
Area	Saltash		Cornwall
Category	No's	%	%
Micro (0 to 9)	590	84	84
Small (10 to 49)	95	14	14
Medium-sized (50 to 249)	20	3	2
Large (250+)	0	0	0
<b>Total</b>	<b>700</b>	<b>100</b>	<b>100</b>

Source: NOMIS, UK Business Counts - Local units.

[An extract compiled from the Inter Departmental Business Register (IDBR) recording the number of local units that were live at a reference date in March. Estimates can be broken down by employment size band, detailed industry (5 digit SIC2007) and legal status. Available from country down to mid layer super output area and Scottish intermediate zones.

A **local unit** is an individual site (for example a factory or shop) associated with an enterprise. It can also be referred to as a *workplace*. NOMIS].

## 6. Employment

This table sets out the number of employees plus working proprietors by sector for Saltash town. It excludes those engaged in agriculture which are not available from this source at this level and those in defence. Due to the disclosure rules regarding BRES data all figures have to be rounded to the nearest 100. This means that where 50 or fewer are employed in an area then a '\*' will appear in the column. [Map 1]

A total of 5,100 were employed. The largest sector here was Wholesale, retail & motors accounting for a third of all employed. Health and Education were the next largest sectors at 14.3% and 13.5% respectively. Wholesale, retail and motors was over-represented in relation to the average for this sector in Cornwall.

<b>Employment (12-14)</b>				
Area	Saltash		Cornwall	England
	No's	%	%	%
A Agriculture, forestry and fishing	0	0.0	0.4	1.3
B Mining and quarrying	0	0.0	0.4	0.1
C Manufacturing	400	7.1	8.4	8.3
D Energy	0	0.0	0.2	0.4
E Water & waste	100	1.2	0.8	0.6
F Construction	200	3.9	6.2	4.5
G Wholesale, retail & motors	1700	33.5	19.4	16.1
H Transport and storage	100	2.0	3.3	4.5
I Accommodation and food service	200	4.8	14.3	6.9
J Information and communication	*	0.8	1.5	4.1
K Financial and insurance	100	1.1	1.4	3.7
L Real estate activities	100	1.0	2.2	1.9
M Professional, scientific and technical	100	2.8	4.7	8.3
N Administrative and support	200	4.8	4.5	8.5
O Public admin etc.	100	1.1	3.5	4.4
P Education	700	13.5	9.1	9.1
Q Health and social work	700	14.3	14.7	12.8
R, Arts, entertainment and recreation	400	7.1	3.0	2.4
S : Other service activities	100	1.1	2.0	2.1
<b>Total</b>	<b>5100</b>	<b>100</b>	<b>100</b>	<b>100</b>

Source: NOMIS, BRES.

### Census 2011

Data from the 2011 census shows that of those resident in Saltash a total of 8,101 people were in employment. This includes all usual residents aged 16 to 74 in employment the week before the census. This does not show where people work. [Map 1]

Wholesale and retail (17.1%), Health (13.6%) and Education (12.2%) were the main sectors.

<b>Employment</b>				
Area	Saltash		Cornwall	England
Sector	No's	%	%	%
A Agriculture, forestry and fishing	51	0.6	3.0	0.8
B Mining and quarrying	16	0.2	0.7	0.2
C Manufacturing	813	10.0	7.9	8.8
D Energy	50	0.6	0.4	0.6
E Water & waste	50	0.6	0.8	0.7
F Construction	598	7.4	9.0	7.7
G Wholesale, retail & motors	1,388	17.1	16.8	15.9
H Transport and storage	392	4.8	3.7	5.0
I Accommodation and food service	400	4.9	9.2	5.6
J Information and communication	138	1.7	1.7	4.1
K Financial and insurance	166	2.0	1.5	4.4
L Real estate activities	113	1.4	1.4	1.5
M Professional, scientific and technical	294	3.6	4.7	6.7
N Administrative and support	313	3.9	4.3	4.9
O Public admin etc.	851	10.5	6.3	5.9
P Education	985	12.2	9.7	9.9
Q Health and social work	1,105	13.6	13.5	12.4
R,S Arts, entertainment and recreation; other services	378	4.7	5.3	5.0
<b>All</b>	<b>8,101</b>	<b>100.0</b>	<b>100.0</b>	<b>100.0</b>

Source: NOMIS, Census 2011.

### Workforce Census 2011

Data from the 2011 census shows the workforce in Saltash, including residents who work in the town and people who commute in. A total of 5,258 people worked in Saltash. This includes all those aged 16 to 74 in employment the week before the census. The largest sector was Wholesale, retail and motors at 25.2%, followed by Education (13.4%) and Health (13.0%). Both Wholesale, retail and motors and Education are over-represented compared to the Cornish average. [Map 2]

<b>Employment by sector</b>			
Area	Saltash		Cornwall
Sector	No's	%	%
A Agriculture, forestry and fishing	24	0.5	3.1
B Mining and quarrying	7	0.1	0.6
C Manufacturing	338	6.4	7.8
D Energy	14	0.3	0.3
E Water & waste	35	0.7	0.8
F Construction	535	10.2	9.1
G Wholesale, retail & motors	1,327	25.2	17.4
H Transport and storage	232	4.4	3.6
I Accommodation and food service	271	5.2	9.5
J Information and communication	63	1.2	1.7
K Financial and insurance	87	1.7	1.5
L Real estate activities	54	1.0	1.4
M Professional, scientific and technical	179	3.4	4.6
N Administrative and support	247	4.7	4.4
O Public admin etc.	156	3.0	5.8
P Education	702	13.4	9.6
Q Health and social work	682	13.0	13.4
R,S Arts, entertainment and recreation; other services	297	5.6	5.3
T Households	6	0.1	0.1
U Extraterritorial	2	0.0	0
<b>All</b>	<b>5,258</b>	<b>100.0</b>	<b>100</b>

Source: NOMIS, Census 2011.



## 7. Occupation

In relation to the Cornish average, Saltash residents were over-represented in terms of Professional occupations (16.7% to 13.8%), Associate professional and technical occupations (12.6% to 10.4%), and under-represented in terms of Managers, directors and senior officials (9.9% to 11.4%), Skilled Trades occupations (13.8% to 17%), and Elementary occupations (9.7% to 12.0%). [Map 1]

<b>Occupation</b>			
Area	Saltash		Cornwall
Occupation	No's	%	%
1. Managers, directors and senior officials	799	9.9	11.4
2. Professional occupations	1,349	16.7	13.8
3. Associate professional and technical occupations	1,020	12.6	10.4
4. Administrative and secretarial occupations	935	11.5	9.5
5. Skilled trades occupations	1,114	13.8	17.0
6. Caring, leisure and other service occupations	833	10.3	10.6
7. Sales and customer service occupations	727	9.0	8.2
8. Process plant and machine operatives	541	6.7	7.1
9. Elementary occupations	783	9.7	12.0
<b>All</b>	<b>8,101</b>	<b>100.0</b>	<b>100.0</b>

Source: NOMIS, Census 2011.

## 8. Qualifications

Data from the 2011 census shows the qualifications held by all usual residents aged 16 and over. Saltash had a slightly lower percentage with no qualifications and with other qualifications compared to the Cornish average. For levels 3 and 4 the proportions were higher in Saltash. [Map 1]

Qualifications			
Area	Saltash		Cornwall
Level	No	%	%
No qualifications	2,540	18.8	22.4
Level 1	1,735	12.8	13.4
Level 2	2,399	17.7	17.4
Apprenticeship	885	6.5	4.5
Level 3	1,908	14.1	13.1
Level 4 and above	3,580	26.4	25.0
Other	493	3.6	4.2
<b>All</b>	<b>13,540</b>	<b>100.0</b>	<b>100.0</b>

Source: NOMIS, Census 2011.

## 9. Jobseekers Allowance

The table below shows the numbers and rate of those claiming JSA for Saltash and the comparative rate for Cornwall. The rate for Saltash has been lower than the Cornish average 0.8% to 1.2%. Both numbers and rates have declined over the year. [Map 1]

<b>JSA claimants - 2015</b>			
Area	Saltash		Cornwall
Month	No's	%	%
Jan	107	1.1	1.6
Feb	106	1.0	1.6
Mar	99	1.0	1.5
Apr	97	1.0	1.3
May	94	0.9	1.2
Jun	80	0.8	1.1
Jul	80	0.8	1.0
Aug	76	0.7	0.9
Sep	74	0.7	1.0
Oct	67	0.7	1.0
Nov	65	0.6	1.0
Dec	64	0.6	1.0
<b>Average</b>	<b>84</b>	<b>0.8</b>	<b>1.2</b>

Source: NOMIS, Jobcentre Plus.

Analysis of the JSA data by current occupation over 2015<sup>3</sup>, shows that the occupational structure of claimants varies from the Cornish average for several groups. There were fewer in the Professional, Personal Service and Elementary occupations and Process, Plant and Machine operatives and more in Sales and Customer Service and Occupation unknown.

<b>JSA Claimants by occupation</b>		
	Saltash	Cornwall
Occupation	%	%
0 : Occupation unknown	8	5
1 : Managers and Senior Officials	8	7
2 : Professional Occupations	0	1
3 : Associate Professional and Technical Occupations	4	2
4 : Administrative and Secretarial Occupations	7	6
5 : Skilled Trades Occupations	2	5
6 : Personal Service Occupations	0	3
7 : Sales and Customer Service occupations	63	50
8 : Process, Plant and Machine Operatives	0	4
9 : Elementary Occupations	9	16
<b>Total</b>	<b>100</b>	<b>100.0</b>

Source: NOMIS, Jobcentre Plus.

<sup>3</sup> Data based on average for the period.

## 10. Vacancies

In 2015 there was a total of 732 vacancies in Saltash. The top ten vacancies by job title are indicated below.

<b>Top ten vacancies - 2015</b>		
Title	No's	%
Web Developer	25	3.4
Accounts Assistant	23	3.1
Registered Nurse	23	3.1
Auxilliary Nurse	18	2.5
Hgv2 / Lgv C Driver	12	1.6
Primary School Teacher	11	1.5
Staff Nurse	11	1.5
Support Worker	10	1.4
Assistant Manager	9	1.2
Meter Reader	8	1.1
	<b>150</b>	<b>20.5</b>

Source: Burning Glass Technologies, Labour Insight.

## 11. Travel to work - residents

Compared to the average for Cornwall, fewer residents worked from home (8.9% to 15.8%), or walked to work (9.4% to 11.8%). However, a far higher percentage drove a car or van (60.3% to 60.2%). [Map 1]

<b>Residents - Method of travel to work (2011)</b>			
Area	Saltash		Cornwall
Method of travel to work (2001 specification)	No's	%	%
Work mainly at or from home	718	8.9	15.8
Underground, metro, light rail, tram	5	0.1	0.1
Train	61	0.8	0.9
Bus, minibus or coach	565	7.0	2.4
Taxi	17	0.2	0.3
Motorcycle, scooter or moped	198	2.4	1.1
Driving a car or van	5,105	63.0	60.2
Passenger in a car or van	384	4.7	5.1
Bicycle	223	2.8	1.5
On foot	758	9.4	11.8
Other method of travel to work	67	0.8	0.7
<b>All</b>	<b>8,101</b>	<b>100</b>	<b>100.0</b>

## 12. Travel to work - workplace

The 2011 census includes an analysis of the mode of travel to work including the number working from home, based on workplace. This shows that three-fifths of those working in Saltash drove a car or van to work (above the Cornish average), with a further 4.8% being a passenger in a car or van. A lower percentage worked at home 12.7% compared to 16.4%, while slightly more walked to work – 12.9% compared to 12.1%. [Map 2]

<b>Workplace - Method of travel to work (2011)</b>			
Method of travel to work (2001 specification)	Saltash		Cornwall
	No's	%	%
Work mainly at or from home	667	12.7	16.4
Underground, metro, light rail or tram	1	0.0	0.1
Train	13	0.2	0.8
Bus, minibus or coach	212	4.0	2.3
Taxi	11	0.2	0.3
Motorcycle, scooter or moped	98	1.9	1.1
Driving a car or van	3,221	61.3	59.7
Passenger in a car or van	251	4.8	5.2
Bicycle	79	1.5	1.5
On foot	679	12.9	12.1
Other method of travel to work	26	0.5	0.5
<b>All</b>	<b>5,258</b>	<b>100.0</b>	<b>100</b>

Source: NOMIS, Census 2011.

### 13. Commuting patterns

Data from the 2011 census shows that nearly two-fifths of residents who were in employment <sup>4</sup>worked in Plymouth. 22% worked in Saltash with another 10.4% working at or from home and 8.3% with no fixed place of work. Overall, 46.8% of those in employment worked in Cornwall. [Map 3]

<b>Travel to work 2011 – workplace of residents</b>		
Area	No's	%
Plymouth	3301	38.8
Mainly work at or from home	883	10.4
Saltash E	844	9.9
Saltash rural	714	8.4
No fixed place	707	8.3
South Hams	390	4.6
Saltash W	347	4.1
Callington and St Ive	205	2.4
St Germans, Quethiock and St Dominick	201	2.4
Liskeard	105	1.2
Liskeard Rural	102	1.2

Source: NOMIS, Census 2011.

The table below shows where people who work in Saltash lived in 2011. Overall, 46.3% lived in Saltash, while 19.4% lived in Plymouth.

<b>Travel to work 2011 – Residence of workforce</b>		
Area	No's	%
Plymouth	1170	19.4
Home	883	14.7
Saltash E	742	12.3
No fixed place	707	11.7
Saltash W	610	10.1
Saltash rural	553	9.2
St Germans, Quethiock and St Dominick	214	3.6
Callington and St Ive	128	2.1
South Hams	121	2.0
<b>Saltash total</b>	<b>2788</b>	<b>46.3</b>
<b>Total</b>	<b>6025</b>	<b>100.0</b>

Source: NOMIS, Census 2011.

<sup>4</sup> Includes employees and self-employed; covers the three Saltash MSOAs.

## 14. Earnings

### Workplace

Average annual workplace earnings for all employees in 2015 was £16,449. This equalled 73.1% of the UK average of £22,487. This was the second lowest figure for a Parliamentary Constituency in Cornwall (Lowest earnings were in St. Ives PC at £14,327 (63.7% of UK). The highest earnings were in Camborne and Redruth at £19,336 (86% of the UK average).

<b>Workplace earnings - annual £</b>					
	All	Male	Female	Full-time	Part-time
United Kingdom	22,487	27,734	17,465	27,645	9,275
England	22,720	28,003	17,492	27,872	9,200
South West	20,754	25,970	15,647	25,982	8,986
<b>Cornwall UA</b>	<b>17,340</b>	<b>21,467</b>	<b>14,294</b>	<b>22,237</b>	<b>9,036</b>
Camborne and Redruth PC	19,336	22,752	14,641	22,493	x
North Cornwall PC	x	21,039	x	x	9,608
South East Cornwall PC	16,449	18,680	11,279	18,770	8,809
St Austell and Newquay PC	16,725	22,368	12,539	22,150	8,666
St Ives PC	14,327	18,543	12,007	20,156	x
Truro and Falmouth PC	18,860	22,154	16,517	23,771	10,167

Source: NOMIS, Annual Survey of Hours and Earnings 2015.

<b>Workplace earnings, all - % of UK</b>					
	All	Male	Female	Full-time	Part-time
United Kingdom	100	100	100	100	100
England	101.0	101.0	100.2	100.8	99.2
South West	92.3	93.6	89.6	94.0	96.9
<b>Cornwall UA</b>	<b>77.1</b>	<b>77.4</b>	<b>81.8</b>	<b>80.4</b>	<b>97.4</b>
Camborne and Redruth PC	86.0	82.0	83.8	81.4	
North Cornwall PC		75.9			103.6
South East Cornwall PC	73.1	67.4	64.6	67.9	95.0
St Austell and Newquay PC	74.4	80.7	71.8	80.1	93.4
St Ives PC	63.7	66.9	68.7	72.9	
Truro and Falmouth PC	83.9	79.9	94.6	86.0	109.6

Source: NOMIS, Annual Survey of Hours and Earnings 2015.

### Annual Earnings – resident

Resident annual earnings in 2015 in South East Cornwall totalled £18,971 (84.4% of the UK average). This was the second highest of the Parliamentary Constituencies in Cornwall.



<b>Resident earnings - annual £</b>					
	All	Male	Female	Full-time	Part-time
<b>United Kingdom</b>	22,487	27,734	17,465	27,645	9,275
<b>England</b>	22,716	28,000	17,500	27,869	9,230
<b>South West</b>	21,283	26,590	16,030	26,518	9,127
Cornwall UA	18,542	22,780	14,990	23,346	9,156
Camborne and Redruth PC	18,217	22,957	13,176	22,830	10,115
North Cornwall PC	x	22,726	x	x	10,011
South East Cornwall PC	18,971	22,545	16,593	23,990	9,215
St Austell and Newquay PC	19,334	21,811	16,049	23,369	8,332
St Ives PC	16,800	20,473	14,193	22,891	x
Truro and Falmouth PC	18,879	23,201	15,051	22,875	9,155

Source: NOMIS, Annual Survey of Hours and Earnings 2015.

<b>Resident earnings - annual %</b>					
	All	Male	Female	Full-time	Part-time
<b>United Kingdom</b>	100.0	100.0	100.0	100.0	100.0
<b>England</b>	101.0	101.0	100.2	100.8	99.5
<b>South West</b>	94.6	95.9	91.8	95.9	98.4
Cornwall UA	82.5	82.1	85.8	84.4	98.7
Camborne and Redruth PC	81.0	82.8	75.4	82.6	109.1
North Cornwall PC	na	81.9	na	na	107.9
South East Cornwall PC	84.4	81.3	95.0	86.8	99.4
St Austell and Newquay PC	86.0	78.6	91.9	84.5	89.8
St Ives PC	74.7	73.8	81.3	82.8	na
Truro and Falmouth PC	84.0	83.7	86.2	82.7	98.7

Source: NOMIS, Annual Survey of Hours and Earnings 2015.

Prepared by:

Prepared by:

**Peter Wills**

Economic Development and Culture Team.

29 January 2016.

If you would like this information  
in another format please contact:

**Cornwall Council**

New County Hall,

Fourth Floor, Truro

**TR1 3AY.**

Telephone: **0300 1234 100**

Email: [enquiries@cornwall.gov.uk](mailto:enquiries@cornwall.gov.uk)

**[www.cornwall.gov.uk](http://www.cornwall.gov.uk)**