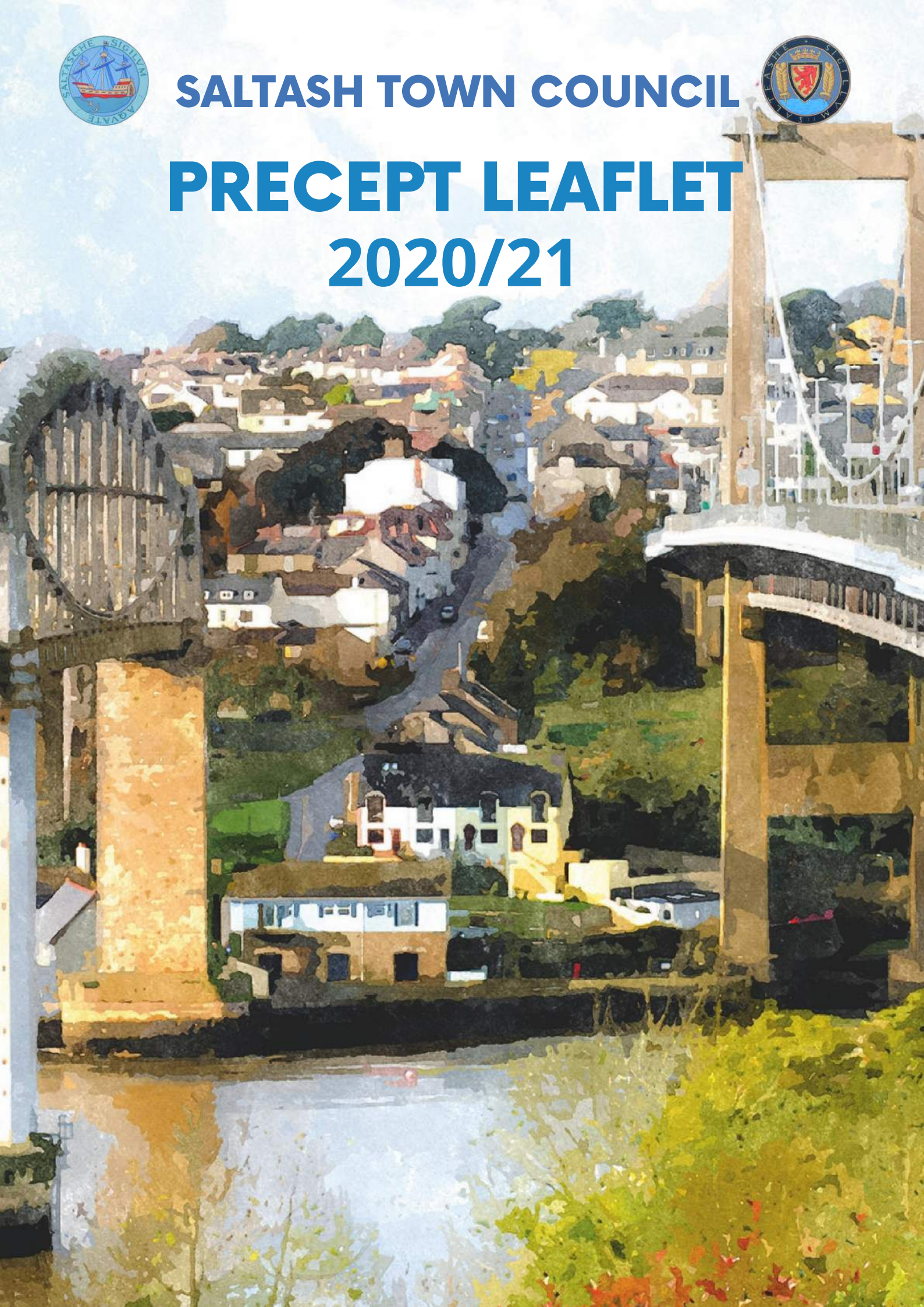




# SALTASH TOWN COUNCIL

# PRECEPT LEAFLET

# 2020/21



(Figures taken from the financial year 2019/20)

# Did You Know...

**There are 3 distinct organisations that provide services for Saltash residents.**

**These are Saltash Town Council, Devon and Cornwall Police and Cornwall Council.**

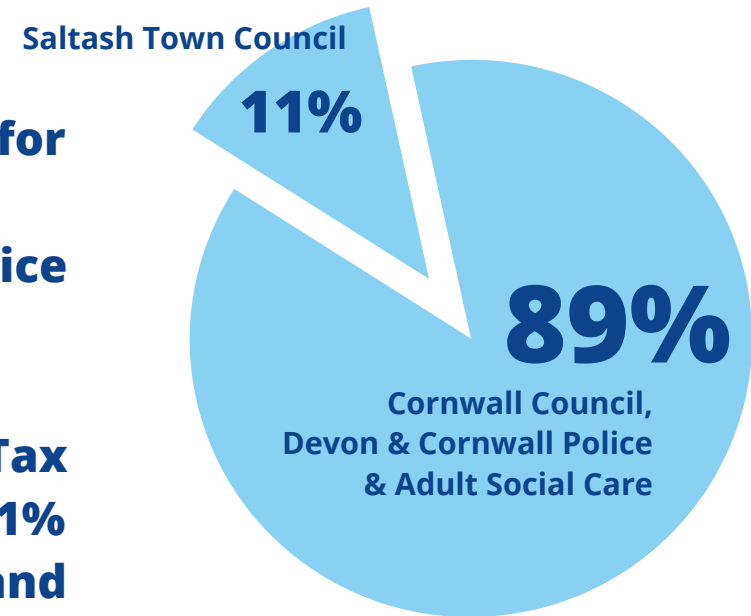
**During the year 2019/2020 the proportion of your Council Tax that went to Saltash Town Council was approximately 11% with the other 89% split between Cornwall Council, Devon and Cornwall Police and Adult Social Care.**

**Saltash Town Council have held precept/budget meetings in recent months to determine the increase that is necessary to maintain the services that residents would rightly expect.**

**The Town Council has now finalised its precept for 2020/21 and continues to improve efficiencies in the way the Town Council operates. It also aims to increase generation of income and reduce costs to the community wherever possible.**

**A programme of transferring control of your services and assets from Cornwall Council to Saltash Town Council will continue through 2020/21 and for the foreseeable future.**

**You can find a list of these services which are planned for this year later in this leaflet.**





# Saltash Town Council - Working for the People of Saltash



This year we have taken over and/or have begun to operate a number of services, including:

## Your Local Library



Saltash Town Council is well into the first year of operating the Library and Information Service after it was devolved to Saltash Town Council in March 2019. Saltash Town Council are proud that we have been able to continue to provide this service to the community of Saltash and continue to work hard in providing the service to a high standard introducing various activities and events and providing an opportunity for individuals, groups and organisations to take advantage of the fantastic free service for the town.

Saltash Town Council are keen to engage with members of the public regarding proposed renovation works and improvements to the library building and therefore intend to hold a public consultation at the Library early 2020. Some ideas the Town Council are considering include the possibility of providing a café offering and utilising the mezzanine floor area for offices. These works will make it possible to generate income to offset the running costs for the building in the future.

## The Jubilee Green Pontoon

Management of the pontoon at Jubilee Green was devolved from Cornwall Council in 2017/18. Without the move, the pontoon would have probably been removed. The pontoon now provides a number of rentable berths with income helping with maintenance. It also provides overnight berthing for visiting boats at a charge, and local river users can use it for 2 hours for free. The pontoon is also used by events like Saltash Regatta, the Three Rivers Race and the waterski event, without it those events would be significantly affected.



## Churchtown Cemetery

Saltash Town Council continues to deliver a well presented and peaceful cemetery at Churchtown including seating, planting and an area to reflect. There will soon be an opportunity to invest in a memorial for a loved one.

## Service Delivery Team

Saltash Town Council has an excellent Service Delivery Team and a well-developed depot to store machinery and this allows Saltash Town Council to continue to define its own services. Saltash Town Council currently manages various grounds maintenance projects including open spaces and footways across the town, watering, green spaces, zone 2 weed control, allotments, maintenance of St Stephen's Churchyard and Churchtown Cemetery, Memorial Peace Garden, street furniture, playparks, hanging baskets, flowerbeds, festive lights, bunting, flags, grit bins, Public Conveniences, Cornish Cross, Jubilee Green Pontoon, health and safety checks, and a wide range of varied outside work, delivering a high standard at all times for the people of Saltash.

With the increase in assets which are likely to be devolved to Saltash Town Council during 2020/21 the Town Council has budgeted to increase the Service Delivery Team to be able to bring more maintenance work in-house, to minimise costs whilst achieving greater efficiencies. In addition to the increase in workforce there is also a need to increase machinery, tools and vehicles to enable the above works to continue to be carried out in an efficient manner.



# Saltash Town Council - Working for the People of Saltash



This year we have taken over and/or have begun to operate a number of services, including:

## Town Council Buildings

Saltash Town Council continues to maintain Town Council buildings, such as The Guildhall, Heritage Centre, Library, Public Conveniences, Longstone Depot and Garage, Churchtown Cemetery, Station Building, and all to a high standard. The Town Council has a rolling five-year maintenance programme for all its property and budget to spread the maintenance costs in the plan.

The fees and charges for moorings, allotments and Guildhall bookings, etc. have been set. It's been agreed to reduce the fee charges for Guildhall bookings to be able to bring them in line with other local venues to encourage more bookings at this iconic venue.

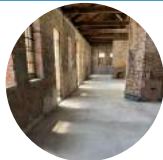
## Maurice Huggins Room

Saltash Town Council recently refurbished the Maurice Huggins Room and options are being explored for this important community asset.

## Public Conveniences

We now maintain and operate four public toilet blocks around the town for the residents and visitors - Alexandra Square, Belle Vue, Longstone Park and the Waterside.

## Station Building



The renovation of the Station Building is progressing well. Saltash Town Council is working towards completion of Spring 2020 for the community of Saltash creating opportunities and driving footfall into the town. Much of the funding has been secured by grants from external sources, therefore the renovation has been achieved at minimum cost to the residents of Saltash.

## Professional Youth Work

Saltash Town Council continues to support Professional Youth Work and Services in the town such as, Livewire, The Core and Junkyard Skatepark, with a budget of £40,000. Saltash Town Council welcomes existing and new applications to be submitted upon the advertising of tender in the next financial year. For further details please email [tenders@saltash.gov.uk](mailto:tenders@saltash.gov.uk)

## Saltash Youth Council

Saltash Town Council continues to support Saltash Town Youth Council by providing funding for young people in Saltash and set a budget of £3,000.

## Community Funding

Saltash Town Council is committed to continue to support a range of causes and events each year through the Community Chest and Festival Fund for charitable activities/events. Saltash Town Council has set a budget for Festival Fund applications of £15,000 and Community Chest applications of £10,000. Saltash Town Council welcomes applications in the next financial year. For further details on how to apply please review the Grant Policy visiting our website:

[www.saltash.gov.uk](http://www.saltash.gov.uk) or email [enquiries@saltash.gov.uk](mailto:enquiries@saltash.gov.uk)

## Working Together

Saltash Town Council is working with Cornwall Council to make Saltash Town plastic free and reduce its carbon footprint. We have also introduced a new Town Centre Vision Sub-Committee which will help to generate ideas for the town and will also have its own budget next year to drive any new initiatives and to enable the Town Council to explore other external funding sources.

Saltash Town Council continues to provide ongoing financial commitments for civic occasions and the Neighbourhood Plan, which is nearing completion.

## **Just so you know....**

To be able to continue to preserve and maintain services taken over from Cornwall Council for the community of Saltash it has been necessary to adjust the precept for 2020/2021 accordingly.

Overall this will see an increase on the **Saltash Town Council** portion of your Council Tax for a typical Band D property of 12.04%

**equating to £25.89 per year**

which is just

**under 50 pence per week**

The larger portion of your council tax will be set by Cornwall Council, Devon and Cornwall Police and Adult Social Care.

The majority of fixed costs across the different budget areas have been set using a cost-based approach and adding 2% increase based on the Consumer Price Index (CPI).

# Current Saltash Town Council Assets and Services...

## Property

The Guildhall  
Library  
Station Building  
Maurice Huggins Room  
Saltash Heritage  
Churchtown Cemetery & Buildings  
Longstone Depot & Garage  
Pontoon  
Pontoon Cabin Office  
Town War Memorial at Saint Nicholas & Faith Church  
Old Oyster House / Oyster Fishing Rights  
Alexandra, Belle Vue, Waterside &  
Longstone Park Public Conveniences  
Festive Lights  
Bunting & Flags  
Eight Noticeboards  
St Stephens Shed  
North Road Bus Shelter  
Grit Bins



## Monuments

Commemorative plaque situated at the Waterside Memorial Site  
Cornish Cross  
Waterside Mural  
Anne Glanville Talking Bench  
Brunel Bust  
Brunel Statue



## Footways

Saltash Town Council manage various footways throughout the town.

## Allotments

Saltash Town Council manage and maintain allotments at Fairmead, Churchtown and Grenfell.

## The Future

Saltash Town Council continues to work with Cornwall Council in transferring services to the town of Saltash and we endeavour to continue in delivering the services for the enjoyment of our residents.

Here is a list of services Saltash Town Council are likely to adopt in the future:

### Phase 1:

Victoria Gardens  
Jubilee Green Boat Park  
Jubilee Green Garages and Dinghy Racks  
Jubilee Green 12-hour stay parking bays  
Jubilee Green slipway  
Waterside / Ashtorre Slipway

### Phase 2:

Land at Ashtorre Wharf  
Jubilee Green  
Brunel Green  
Saltash Town Beach  
Jubilee Green car park

### Phase 3:

Saltash Town Quay  
Brunel Green Sea Wall  
Street Lighting  
Saltash Pier  
Land at Tamar Street (including Waterside play area)



## Land Maintained by Saltash Town Council



Grassmere Way green space - Maintenance  
 Grassmere Way play area – Maintenance of equipment  
 Honeysuckle playpark – Maintenance of equipment  
 Ashton Way playpark – Maintenance of equipment  
 Ashton Way green space - Maintenance  
 Grenfell, Fairmead, Churchtown allotments  
 Trematon Pound – Grass cutting and maintenance of pampas grass  
 Elwell Woods Trees

Elwell Woods Open Space  
 Huntley Gardens – Grass cutting, trees and shrub maintenance  
 Silver Street Gardens – Grass cutting, trees and shrub maintenance  
 Culver Road car park border – Maintenance of shrubs  
 Victoria Gardens flowerbeds - Maintenance  
 Railway station planters, boat and flowerbed - Maintenance  
 Lower Fore Street – Shrub and tree maintenance  
 Culver Road car park - Maintenance of fence, trees and shrubs

Nine Fore Street planters and boxes - Maintenance  
 North Road/A38 Slip Road gardens - Maintenance  
 North Road rear of bus shelter – Grass, trees and shrub maintenance.  
 Pillmere Open Spaces  
 Various planters throughout the town  
 St Stephen's Churchyard - Maintenance  
 Memorial Peace Garden – Grass cutting and shrub maintenance  
 Badgers Walk green space - Maintenance




**If you would  
like to you can  
contact us...**

 **enquiries@saltash.gov.uk**

 **01752 844 846**

 **www.saltash.gov.uk**

 **The Guildhall  
12 Lower Fore Street  
Saltash  
PL12 6JX**

**...we'd like to hear your  
views.**